

Madison, Wisconsin

CITY OF MADISON

CITY ENGINEERING DIVISION

DEPARTMENT OF PUBLIC WORKS

PLAN OF PROPOSED IMPROVEMENT

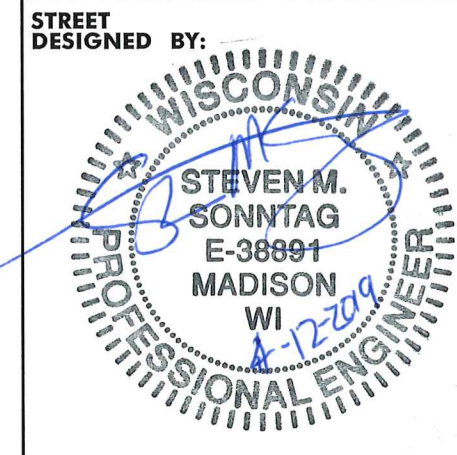
PUBLIC IMPROVEMENT PROJECT APPROVED

April 16, 2019

BY THE COMMON COUNCIL OF MADISON, WISCONSIN

PUBLIC IMPROVEMENT DESIGN APPROVED BY:

[Signature] 4/12/19
City Engineer Date



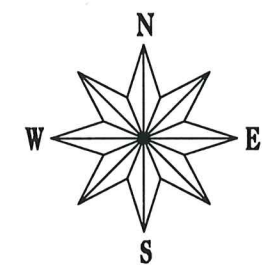
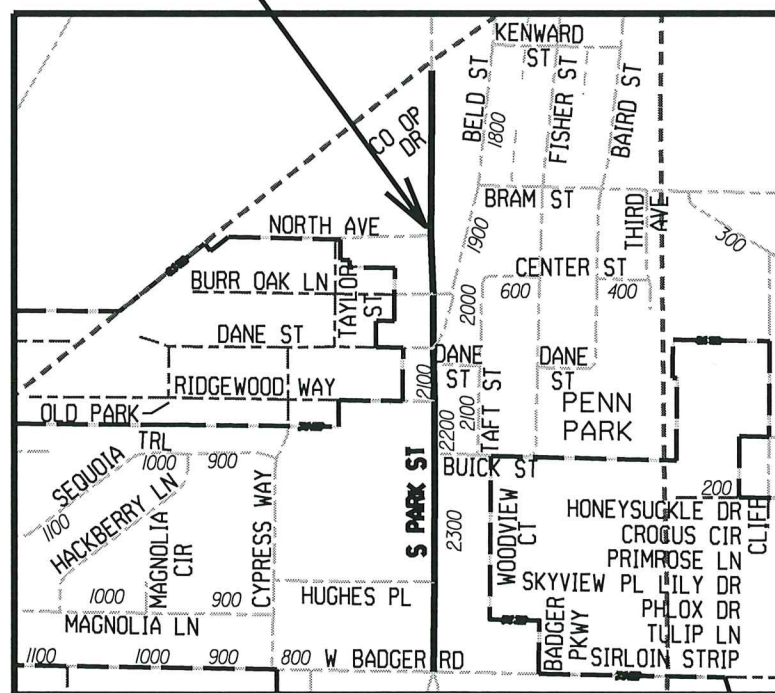
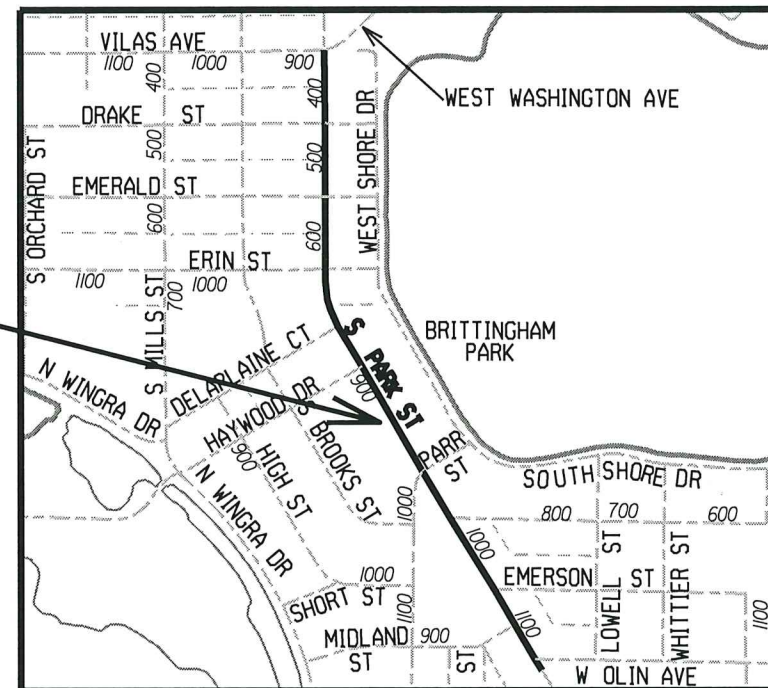
INDEX OF SHEETS

SHEET NO.	TITLE
1	DETAIL
D-1	PLAN & PROFILE
P1-P12	PAVEMENT MARKING
M1-M9	

SOUTH PARK STREET CONCRETE PAVEMENT REPAIRS - 2019

CITY PROJECT NO. 11132
8307

CONSTRUCTION PROJECT LOCATION



CONVENTIONAL SIGNS	
FIELD VERIFY ALL UTILITY LOCATIONS	
GAS	— G —
STORM SEWER	— ST —
SANITARY SEWER	— SAN —
WATER	— W —
OVERHEAD ELECTRIC	— OH —
POWER POLE	□
ADA COMPLIANT RAMP W/ DETECTABLE WARNING FIELD	▤

NOTES:
 ALL GUTTERS SHALL DRAIN WITH A MINIMUM GRADE OF 0.50% TOWARD STORM SEWER INLETS.
 SIDEWALK RAMPS AND CURB THRU SIDEWALK RAMPS SHALL HAVE A MAXIMUM SLOPE OF 1" PER 12". SIDEWALK AND CURB RAMPS SHALL BE CONSTRUCTED WITH A SIDE SLOPE OF 2.00%.
 SIDEWALK SHALL HAVE A MINIMUM LONGITUDINAL SLOPE OF 0.50% AND A MAXIMUM LONGITUDINAL SLOPE OF 5.00% EXCEPT WHERE STREET GRADES EXCEED 5.00%.

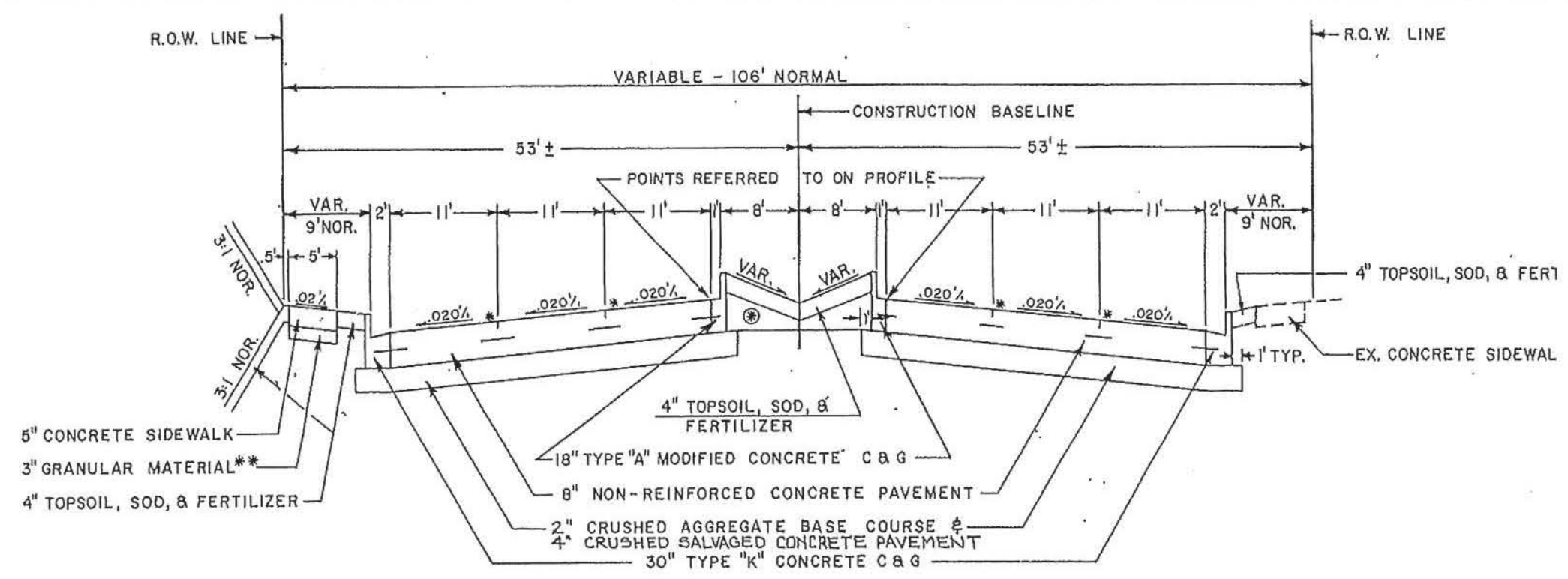
EARTH WORK SUMMARY:	
ESTIMATED UNDISTRIBUTED UNDERCUT.....	170.00 C.Y.
TOTAL UNCLASSIFIED EXCAVATION CUT.....	170.00 C.Y.

PLOT SCALE:

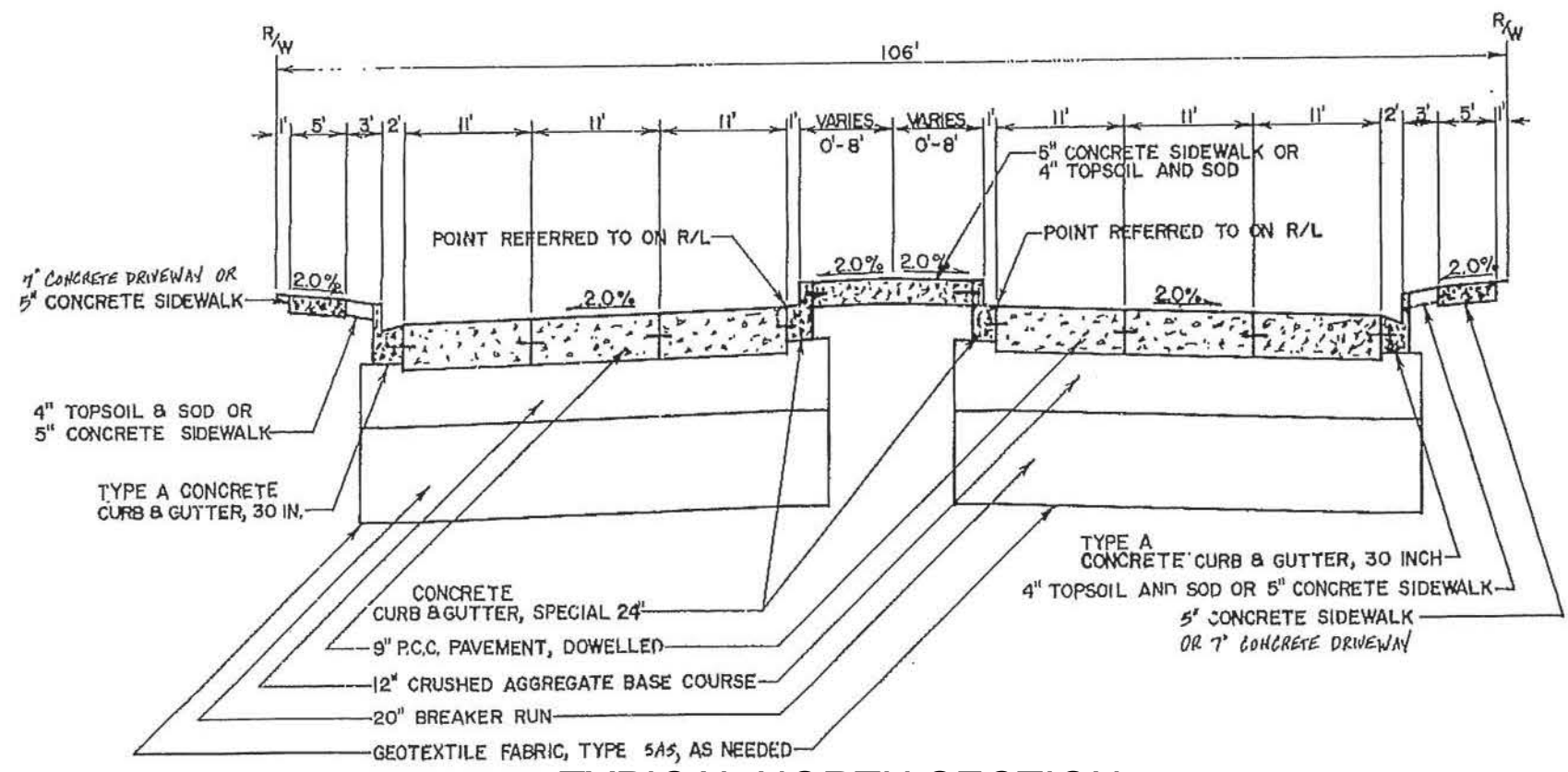
PLOT NAME:

REV. DATE:

ORIGINATOR: CITY OF MADISON, STREETS DIVISION



TYPICAL SOUTH SECTION
 S PARK ST - W BADGER RD TO RR CROSSING



TYPICAL NORTH SECTION
 S PARK ST - 100 FEET S OF W OLIN AVE TO W WASHINGTON AVE

NOTE: ALL CROSS-HATCHED AREAS ON THE PLANS ARE
 8 INCH OR 9 INCH CONCRETE PAVEMENT REPLACEMENT

PLAN AND PROFILE

SOUTH PARK STREET CITY OF MADISON



S PARK STREET

WEST BADGER ROAD

HUGHES PLACE

2427
02-4

2413

05-8

04

2401

PLAN AND PROFILE

SOUTH PARK STREET CITY OF MADISON



S PARK STREET



000

2305

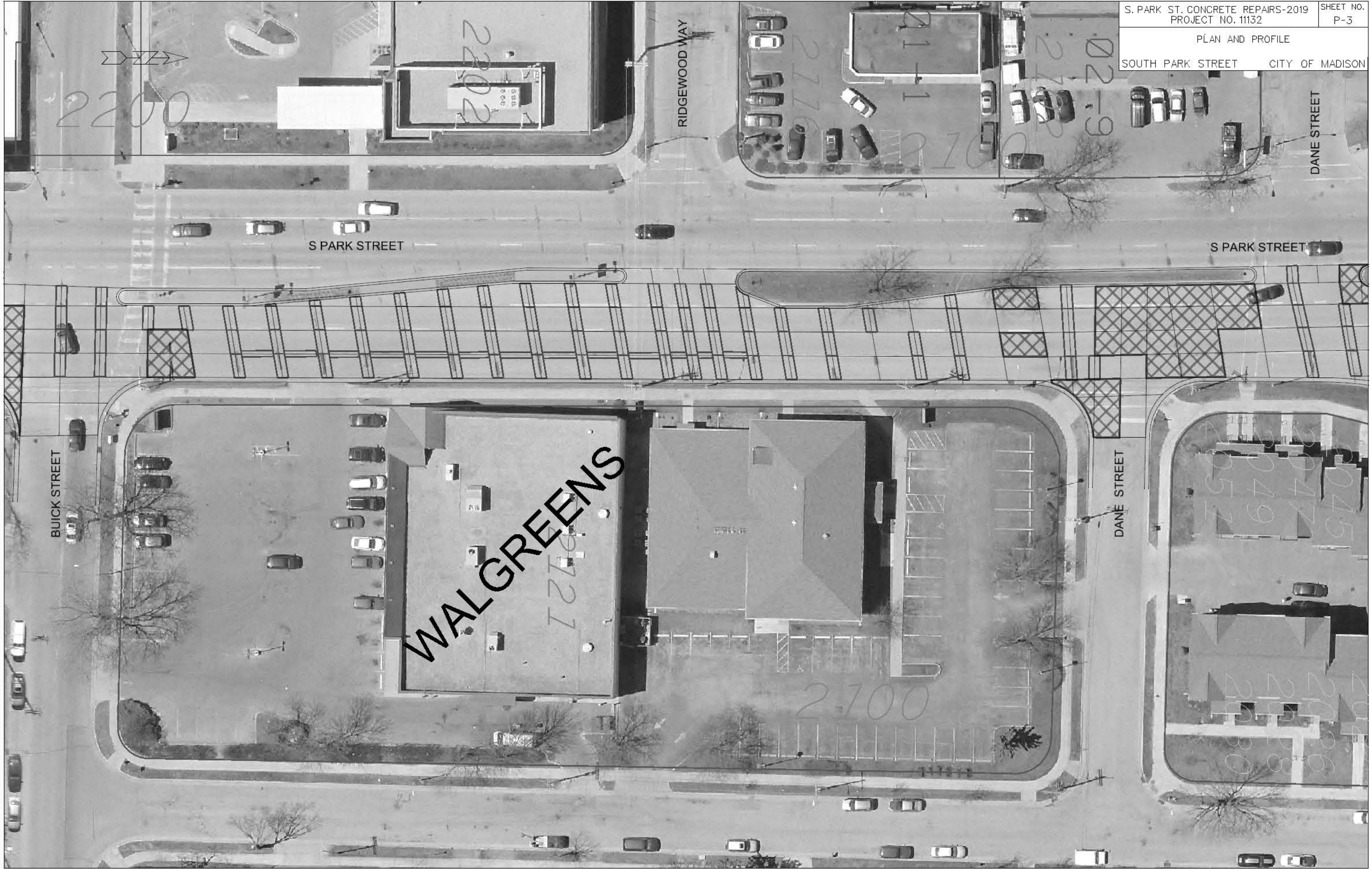
23-2

2301-6

2222

PLAN AND PROFILE

SOUTH PARK STREET CITY OF MADISON



WALGREENS



RIDGEWOOD WAY

DANE STREET

S PARK STREET

S PARK STREET

BUICK STREET

DANE STREET

PLAN AND PROFILE

SOUTH PARK STREET CITY OF MADISON



S PARK STREET

7800

7903
7904
7907

7862

7833

7850

7837

7820



PLAN AND PROFILE

SOUTH PARK STREET CITY OF MADISON



S PARK STREET

XIX

7825

7823

04-5

7824

10-2

06-1

07-9

7820

7806

14-4

1709

01-3

11-0

7812

7804

PLAN AND PROFILE

SOUTH PARK STREET CITY OF MADISON



PLAN AND PROFILE

SOUTH PARK STREET CITY OF MADISON



PLAN AND PROFILE

SOUTH PARK STREET CITY OF MADISON



PLAN AND PROFILE

SOUTH PARK STREET CITY OF MADISON



PLAN AND PROFILE

SOUTH PARK STREET CITY OF MADISON



S PARK STREET

S PARK STREET

REM & REP C&G

DRAKE STREET

VILAS AVENUE

WEST WASHINGTON AVENUE



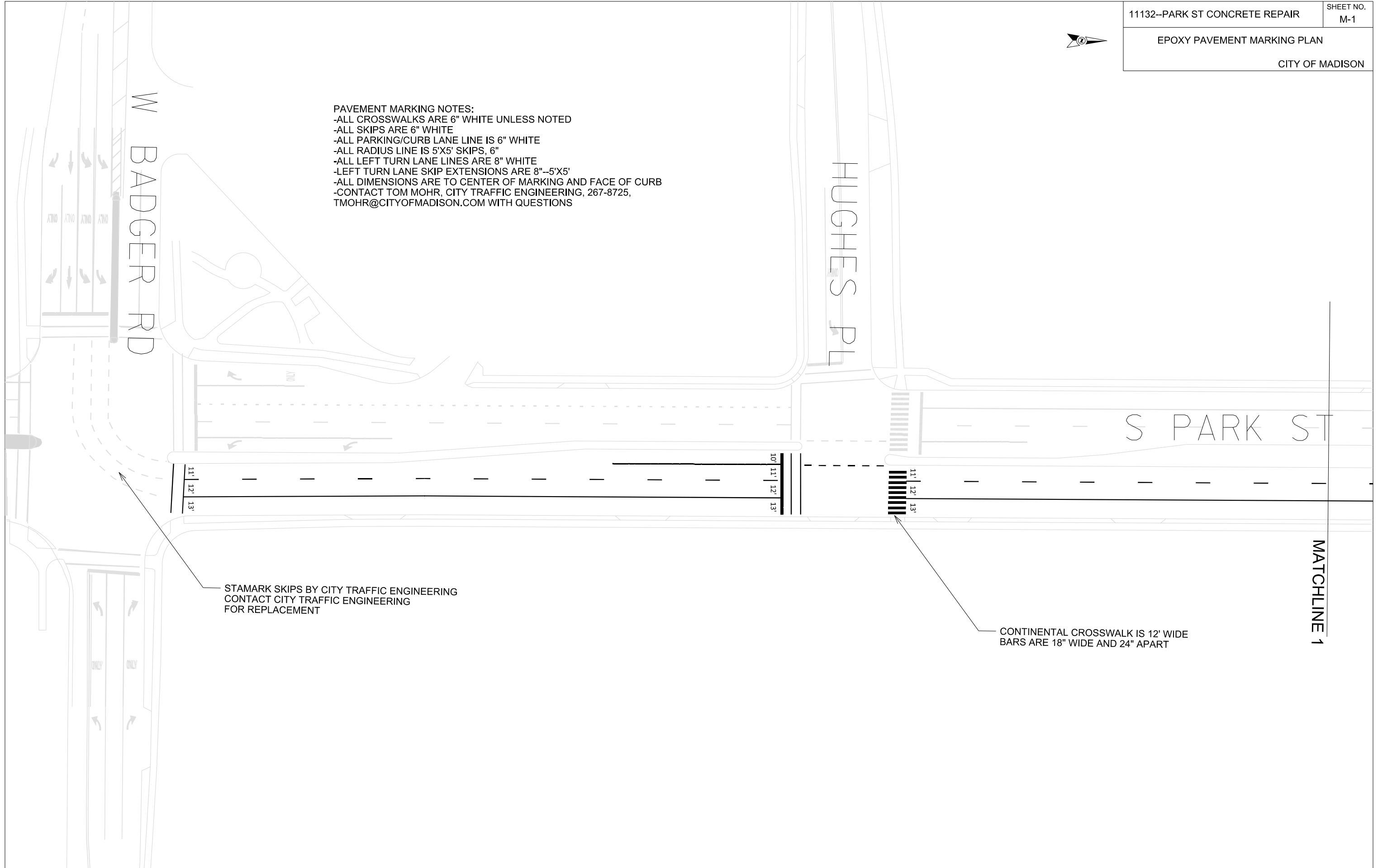
PAVEMENT MARKING NOTES:
 -ALL CROSSWALKS ARE 6" WHITE UNLESS NOTED
 -ALL SKIPS ARE 6" WHITE
 -ALL PARKING/CURB LANE LINE IS 6" WHITE
 -ALL RADIUS LINE IS 5'X5' SKIPS, 6"
 -ALL LEFT TURN LANE LINES ARE 8" WHITE
 -LEFT TURN LANE SKIP EXTENSIONS ARE 8"--5'X5'
 -ALL DIMENSIONS ARE TO CENTER OF MARKING AND FACE OF CURB
 -CONTACT TOM MOHR, CITY TRAFFIC ENGINEERING, 267-8725,
 TMOHR@CITYOFMADISON.COM WITH QUESTIONS

PLOT SCALE:

PLOT NAME:

REV. DATE:

ORIGINATOR: CITY OF MADISON, TRAFFIC ENG. DIV.



STAMARK SKIPS BY CITY TRAFFIC ENGINEERING
 CONTACT CITY TRAFFIC ENGINEERING
 FOR REPLACEMENT

CONTINENTAL CROSSWALK IS 12' WIDE
 BARS ARE 18" WIDE AND 24" APART

MATCHLINE 1



PAVEMENT MARKING NOTES:
 -ALL CROSSWALKS ARE 6" WHITE UNLESS NOTED
 -ALL SKIPS ARE 6" WHITE
 -ALL PARKING/CURB LANE LINE IS 6" WHITE
 -ALL RADIUS LINE IS 5'X5' SKIPS, 6"
 -ALL LEFT TURN LANE LINES ARE 8" WHITE
 -LEFT TURN LANE SKIP EXTENSIONS ARE 8"-5'X5'
 -ALL DIMENSIONS ARE TO CENTER OF MARKING AND FACE OF CURB
 -CONTACT TOM MOHR, CITY TRAFFIC ENGINEERING, 267-8725,
 TMOHR@CITYOFMADISON.COM WITH QUESTIONS

RIDGEWOOD WAY

S PARK ST

BUICK ST

DANE ST

MATCHLINE 1

MATCHLINE 2

LADDER CROSSWALK HAS 12" LINES
AND 24" BARS

10' 11' 12' 13'

11' 12' 13'

10' 11' 12' 13'

10' 11' 12' 13'

PLOT SCALE:

PLOT NAME:

REV. DATE:

ORIGINATOR: CITY OF MADISON, TRAFFIC ENG. DIV.



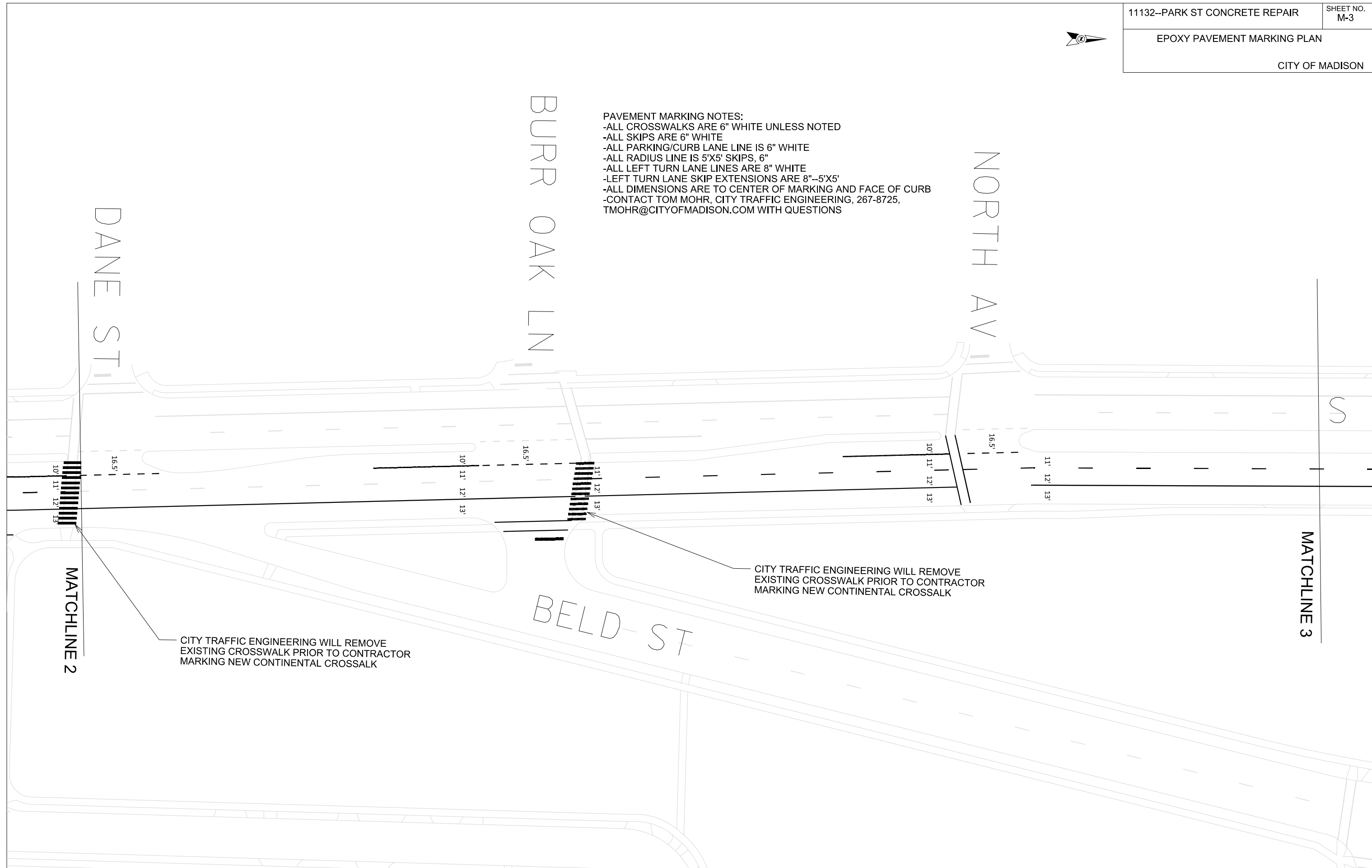
PAVEMENT MARKING NOTES:
 -ALL CROSSWALKS ARE 6" WHITE UNLESS NOTED
 -ALL SKIPS ARE 6" WHITE
 -ALL PARKING/CURB LANE LINE IS 6" WHITE
 -ALL RADIUS LINE IS 5'X5' SKIPS, 6"
 -ALL LEFT TURN LANE LINES ARE 8" WHITE
 -LEFT TURN LANE SKIP EXTENSIONS ARE 8"--5'X5'
 -ALL DIMENSIONS ARE TO CENTER OF MARKING AND FACE OF CURB
 -CONTACT TOM MOHR, CITY TRAFFIC ENGINEERING, 267-8725,
 TMOHR@CITYOFMADISON.COM WITH QUESTIONS

PLOT SCALE:

PLOT NAME:

REV. DATE:

ORIGINATOR: CITY OF MADISON, TRAFFIC ENG. DIV.



MATCHLINE 2

CITY TRAFFIC ENGINEERING WILL REMOVE
 EXISTING CROSSWALK PRIOR TO CONTRACTOR
 MARKING NEW CONTINENTAL CROSSWALK

CITY TRAFFIC ENGINEERING WILL REMOVE
 EXISTING CROSSWALK PRIOR TO CONTRACTOR
 MARKING NEW CONTINENTAL CROSSWALK

MATCHLINE 3



PAVEMENT MARKING NOTES:
 -ALL CROSSWALKS ARE 6" WHITE UNLESS NOTED
 -ALL SKIPS ARE 6" WHITE
 -ALL PARKING/CURB LANE LINE IS 6" WHITE
 -ALL RADIUS LINE IS 5'X5' SKIPS, 6"
 -ALL LEFT TURN LANE LINES ARE 8" WHITE
 -LEFT TURN LANE SKIP EXTENSIONS ARE 8"--5'X5'
 -ALL DIMENSIONS ARE TO CENTER OF MARKING AND FACE OF CURB
 -CONTACT TOM MOHR, CITY TRAFFIC ENGINEERING, 267-8725,
 TMOHR@CITYOFMADISON.COM WITH QUESTIONS

PLOT SCALE:

PLOT NAME:

REV. DATE:

ORIGINATOR: CITY OF MADISON, TRAFFIC ENG. DIV.

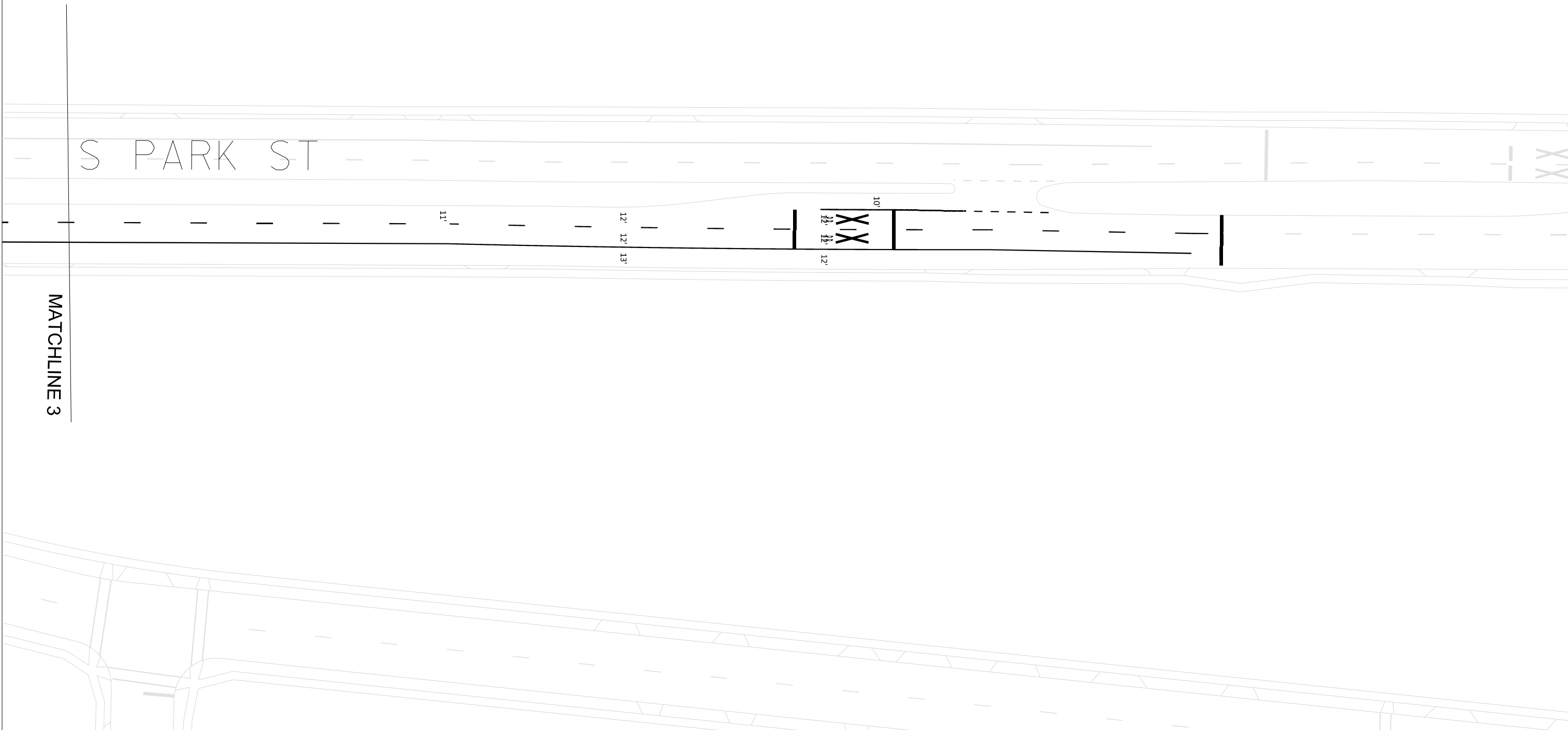
S PARK ST

MATCHLINE 3

11'

12' 12' 13'

10'
12' 12' 12'





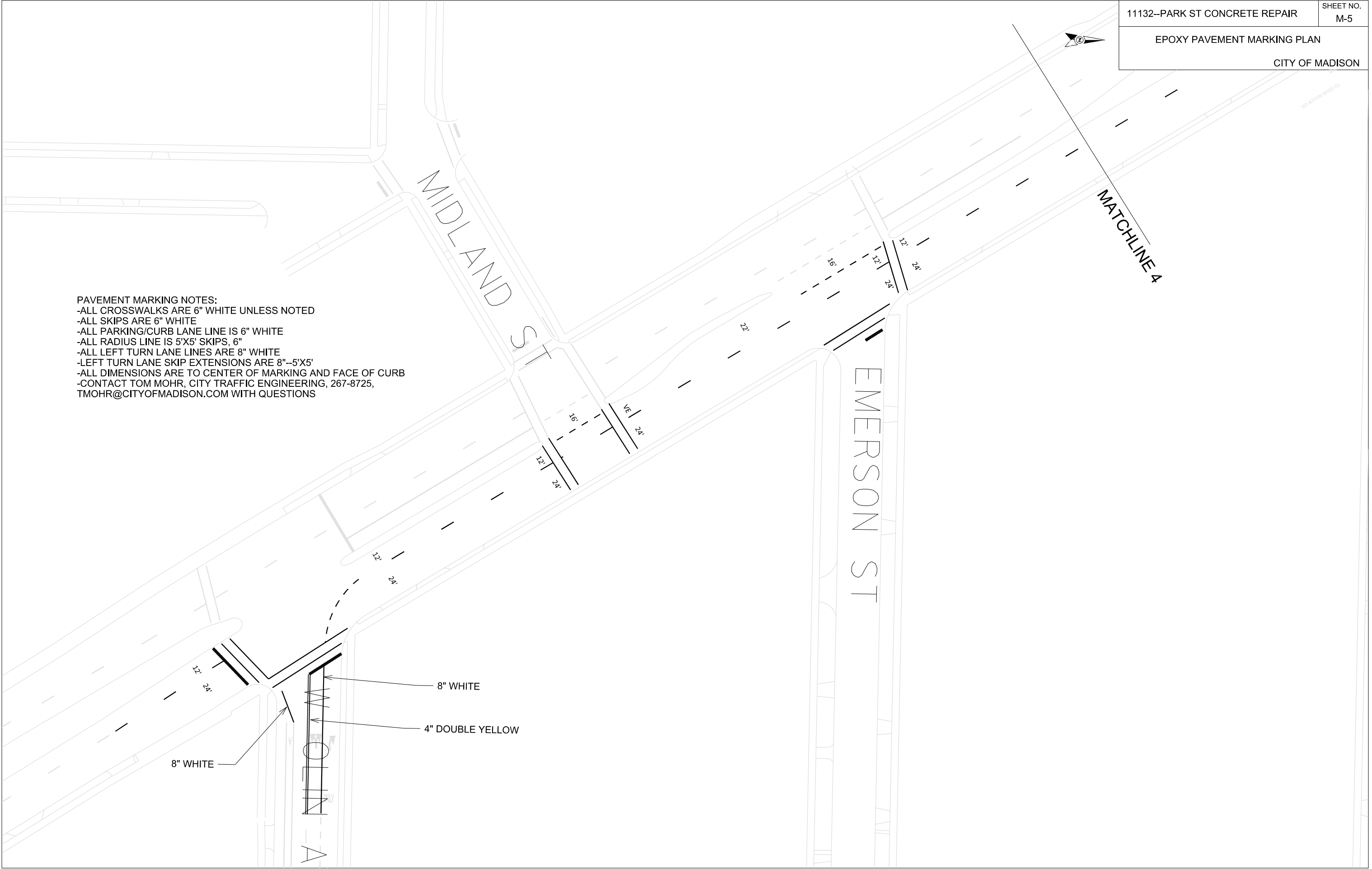
PLOT SCALE:

PLOT NAME:

REV. DATE:

ORIGINATOR: CITY OF MADISON, TRAFFIC ENG. DIV.

- PAVEMENT MARKING NOTES:
- ALL CROSSWALKS ARE 6" WHITE UNLESS NOTED
 - ALL SKIPS ARE 6" WHITE
 - ALL PARKING/CURB LANE LINE IS 6" WHITE
 - ALL RADIUS LINE IS 5'X5' SKIPS, 6"
 - ALL LEFT TURN LANE LINES ARE 8" WHITE
 - LEFT TURN LANE SKIP EXTENSIONS ARE 8"--5'X5'
 - ALL DIMENSIONS ARE TO CENTER OF MARKING AND FACE OF CURB
 - CONTACT TOM MOHR, CITY TRAFFIC ENGINEERING, 267-8725, TMOHR@CITYOFMADISON.COM WITH QUESTIONS



8" WHITE

4" DOUBLE YELLOW

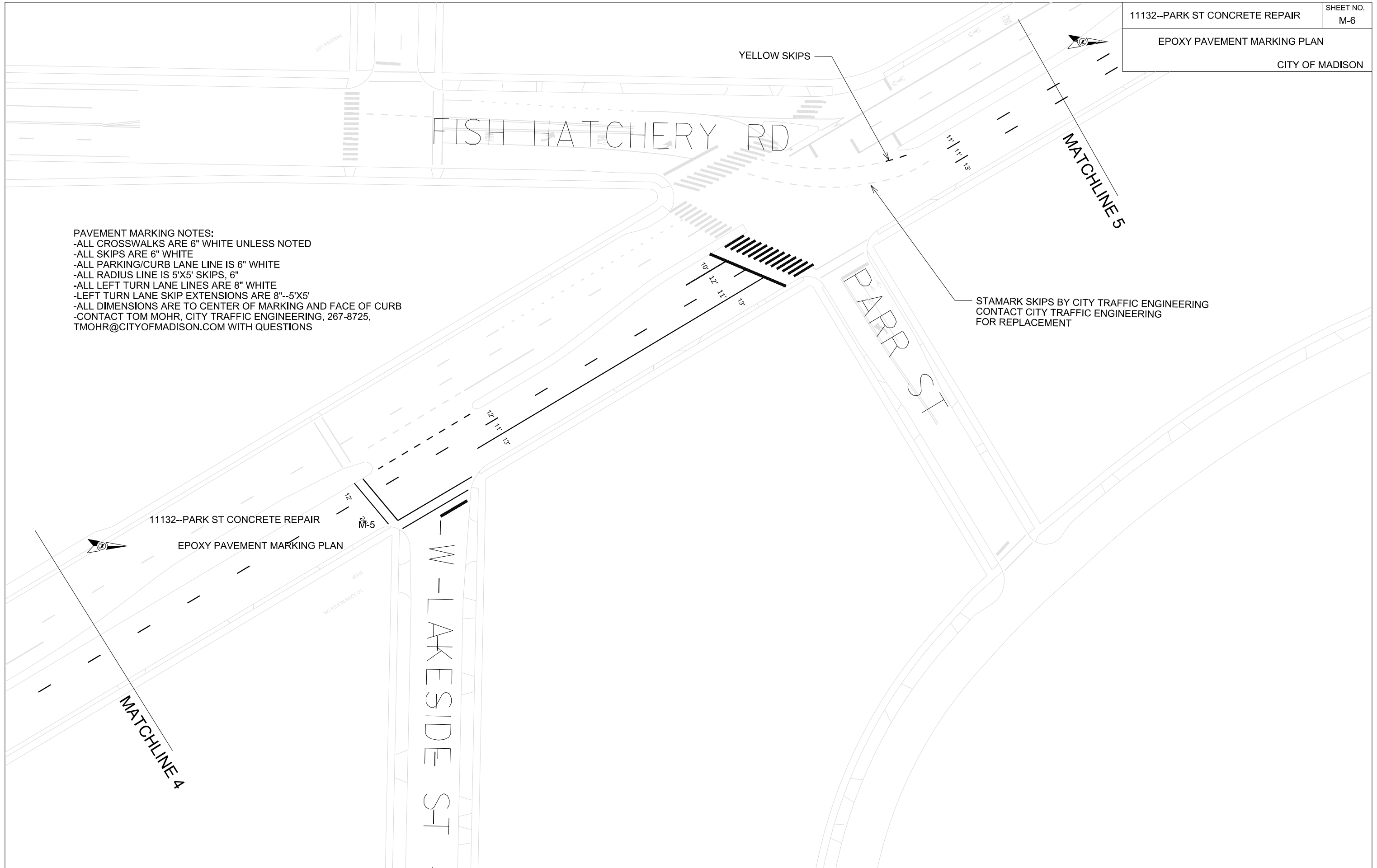
8" WHITE

PLOT SCALE:

PLOT NAME:

REV. DATE:

ORIGINATOR: CITY OF MADISON, TRAFFIC ENG. DIV.



PAVEMENT MARKING NOTES:
 -ALL CROSSWALKS ARE 6" WHITE UNLESS NOTED
 -ALL SKIPS ARE 6" WHITE
 -ALL PARKING/CURB LANE LINE IS 6" WHITE
 -ALL RADIUS LINE IS 5'X5' SKIPS, 6"
 -ALL LEFT TURN LANE LINES ARE 8" WHITE
 -LEFT TURN LANE SKIP EXTENSIONS ARE 8"--5'X5'
 -ALL DIMENSIONS ARE TO CENTER OF MARKING AND FACE OF CURB
 -CONTACT TOM MOHR, CITY TRAFFIC ENGINEERING, 267-8725,
 TMOHR@CITYOFMADISON.COM WITH QUESTIONS

HAYWOOD DR

DELAPLAINE CT

MATCHLINE 6

PAVEMENT MARKING NOTES:
 -ALL CROSSWALKS ARE 6" WHITE UNLESS NOTED
 -ALL SKIPS ARE 6" WHITE
 -ALL PARKING/CURB LANE LINE IS 6" WHITE
 -ALL RADIUS LINE IS 5'X5' SKIPS, 6"
 -ALL LEFT TURN LANE LINES ARE 8" WHITE
 -LEFT TURN LANE SKIP EXTENSIONS ARE 8"--5'X5'
 -ALL DIMENSIONS ARE TO CENTER OF MARKING AND FACE OF CURB
 -CONTACT TOM MOHR, CITY TRAFFIC ENGINEERING, 267-8725,
 TMOHR@CITYOFMADISON.COM WITH QUESTIONS

PLOT SCALE:

PLOT NAME:

REV. DATE:

ORIGINATOR: CITY OF MADISON, TRAFFIC ENG. DIV.



PAVEMENT MARKING NOTES:
 -ALL CROSSWALKS ARE 6" WHITE UNLESS NOTED
 -ALL SKIPS ARE 6" WHITE
 -ALL PARKING/CURB LANE LINE IS 6" WHITE
 -ALL RADIUS LINE IS 5'X5' SKIPS, 6"
 -ALL LEFT TURN LANE LINES ARE 8" WHITE
 -LEFT TURN LANE SKIP EXTENSIONS ARE 8"--5'X5'
 -ALL DIMENSIONS ARE TO CENTER OF MARKING AND FACE OF CURB
 -CONTACT TOM MOHR, CITY TRAFFIC ENGINEERING, 267-8725,
 TMOHR@CITYOFMADISON.COM WITH QUESTIONS

ERIN ST

EMERALD ST

MATCHLINE 7

MATCHLINE 6

PLOT SCALE:

PLOT NAME:

REV. DATE:

ORIGINATOR: CITY OF MADISON, TRAFFIC ENG. DIV.



PAVEMENT MARKING NOTES:
 -ALL CROSSWALKS ARE 6" WHITE UNLESS NOTED
 -ALL SKIPS ARE 6" WHITE
 -ALL PARKING/CURB LANE LINE IS 6" WHITE
 -ALL RADIUS LINE IS 5'X5' SKIPS, 6"
 -ALL LEFT TURN LANE LINES ARE 8" WHITE
 -LEFT TURN LANE SKIP EXTENSIONS ARE 8"--5'X5'
 -ALL DIMENSIONS ARE TO CENTER OF MARKING AND FACE OF CURB
 -CONTACT TOM MOHR, CITY TRAFFIC ENGINEERING, 267-8725,
 TMOHR@CITYOFMADISON.COM WITH QUESTIONS

PLOT SCALE:

PLOT NAME:

REV. DATE:

ORIGINATOR: CITY OF MADISON, TRAFFIC ENG. DIV.

DRAKE ST

VILAS AVE

WASHINGTON AVE

WHITE SKIPS

6"--2' LINE, 6' GAP

BIKE SYMBOL

YELLOW SKIPS

MATCHLINE 7

20'

10' 12' 11' 13'

12'

11'

11' 11' 11' 6'